

**UW-Madison Division of Extension
Grant County**

Youth & Agriculture Center
916 E. Elm St., Suite A
Lancaster, WI 53813
Phone (608) 723-2125
FAX (608) 723-4315

<http://grant.extension.wisc.edu>



Extension

UNIVERSITY OF WISCONSIN-MADISON
GRANT COUNTY

April 17, 2026

**AMENDED AGENDA
AGRICULTURE AND EXTENSION EDUCATION/FAIR COMMITTEE MEETING**

The Grant County Agriculture & Extension Education/Fair Committee Meeting is scheduled for Monday, April 20, 2026, at 9:00 a.m. in the Extension Office Conference Room at the Youth & Agriculture Center, 916 E. Elm St, Lancaster, Wisconsin.

Join Zoom Meeting

<https://co-grant-wi-gov.zoom.us/j/84812608868?pwd=ayBioq9ezx6Y8BbTiRqkWK0d5OrXiG.1>

Meeting ID: 848 1260 8868

Passcode: 999452

Dial in: 1-312-626-6799 US (Chicago)

Consideration will be given and/or action taken on any or all of the following agenda items.

1. Call to order
2. Statement as to Proper Notice of Meeting
3. Approval of Agenda
4. Approval of Minutes of the Meeting held March 23, 2026
5. Business Relating to Grant County Extension or the Youth and Ag Center
 - a. Educator Updates
 - Bev Doll, Human Development and Relationships Educator
 - Charisse Orth, 4-H Program Educator
 - Casey Lobdell/Jackie McCarville/Jordyn Sattler, Regional Agriculture Educators
 - b. 4-H Thrive Survey Presentation – Charise Orth
 - c. Area Extension Director Update
 1. County Official Workshop Training – Monday, May 11
 2. Rural Community Economic Development Specialist Update
 - d. Grant County Economic Development Special Project Budget Funds
 - e. Review Vouchers
6. Grounds and Maintenance Report & Youth and Agriculture Center
 - a. Grounds Repair
7. Grant County Fair and Fairgrounds Business
 - a. Fairest & Junior Fairest of the Fair
 - b. PRRS and PEDv for Swine Update
 - c. Beer/Food Organizations
 - d. Wisconsin Association of Fairs App
 - e. Corteva Agriscience Grant – Platinum Ag
 - f. Review all Fairgrounds Vouchers
8. Livestock Claims
9. Adjourn

AGRICULTURE AND EXTENSION EDUCATION/FAIR COMMITTEE MEETING
Monday, March 23, 2026
Youth & Agriculture Center, 916 E. Elm St., Lancaster, WI 53813

The meeting was called to order at 9:00 a.m. by Chairman Roger Guthrie. Roll Call was taken with six committee members present: Roger Guthrie, Joe Mumm, Pat Schroeder, Gary Northouse, Kathy Kopp and Mike Timmerman. Others present were Bob Keeney, Amy Olson, Lori Vesperman, Shane Drinkwater, Charisse Orth, Bev Doll, Jackie McCarville and Lynn Perkins. Present by Zoom was Tonya White and Jacqueline Varholik.

The meeting notice was posted at the Extension Office, Youth & Agriculture Center, Administration Building, on the Grant County website and emailed to media.

Motion by Pat Schroeder, seconded by Gary Northouse, to approve the agenda. Motion carried.

Motion by Gary Northouse, seconded by Kathy Kopp, to approve the minutes of the meeting held February 16, 2026. Motion carried.

Educator updates were given by Bev Doll, Charisse Orth and Jackie McCarville.

Lynn Perkins gave the AED update sharing the County Officials Training Workshop date of May 15 in Dodgeville and a report from Blake Roberts.

Motion by Joe Mumm, seconded by Kathy Kopp, to accept and sign the snowmobile resolution authorizing participation in public funding for snowmobile trails in Grant County for the 2026-2027 snowmobile year. Motion carried.

Farm Progress Days Scholarship applications were reviewed. The committee awarded the scholarship to Applicant #3, Libby Vogt.

Motion by Gary Northouse, seconded by Mike Timmerman, to approve the Extension vouchers. Motion carried.

Amy gave the grounds and maintenance and Youth & Agriculture Center report.

A new electrical panel was put on the pole between the Eckstein Hall and Jaycees building. Maintenance staff is working on getting rented winter storage vehicles out of buildings.

A jump wire on the pole between the fairgrounds and school was replaced.

Fair and Fairgrounds Business

Jacqueline Varholik, representing Christmas for Kids - Southwest Wisconsin, requested the fee be waived or reduced for use of the Youth & Ag Center on November 28, 2026, for their fundraising event, with setup on November 27. Motion by Gary Northouse, seconded by Pat Schroeder, to waive the fee. Motion carried.

Motion by Kathy Kopp, seconded by Joe Mumm, to work on a proposed decision for the 2027 Fair regarding a non-terminal swine show, due to a change in requirements for testing of PRRS and PEDv. Amy will prepare a survey for swine exhibitors. Motion carried, 5-1.

Poultry events/movement is suspended through May 10, 2026. The Motorcycle Supercross promoter would like to add pre-timing trials to the event this year. The District Meeting will be held April 8 at the Chula Vista. Dates for a fall EWaste event in 2026 at the fairgrounds are not available. Spring 2027 dates will be looked at. Amy is continuing to work on sponsorship.

Motion by Joe Mumm, seconded by Pat Schroeder, to adjourn. The next scheduled meeting is April 20, 2026. Motion carried. Adjourned at 10:45 a.m.

Kathy Kopp
Secretary

Lori Vesperman
Recording Secretary

HUMAN DEVELOPMENT & RELATIONSHIPS - Bev Doll



The Extension Institute of Human Development & Relationships provides the tools Wisconsinites need to thrive as well-rounded, capable individuals and families. We support families in caring for each other in ways that promote growth and understanding. Our programs promote aging-friendly communities, coach effective parents and help families put technology, mindfulness, and financial awareness to use.

- A monthly parenting program for fathers where participants learn skills to build their children's social and emotional learning. This series is designed to improve understanding of positive parenting practices, while providing social connections for fathers and father figures.
- A monthly topic-specific series (Resilient Co-Parenting) for parents and caregivers experiencing separation, divorce, or changes in the custody of their children, where they learn skills to improve communication and problem-solving, support children emotionally, and keep kids out of the middle of conflict. This series is designed to improve understanding of positive parenting practices that are useful during stress, while providing social connection for parents experiencing family transitions.
- Planning AHEAD - A 7-session course that helps adults of all ages to make end-of-life financial, healthcare, and final wishes decisions in order to reduce the stress experienced by survivors and to ensure that their wishes are honored.
- Encouraging Financial Conversations - A six-module course for social workers, case managers, and community agency staff where they learn about financial competency skills such as goal setting, budgeting, building credit and paying off debts, strategies for saving money, and how to engage their clients in money management discussions. The goal of this effort is to build their knowledge and confidence when engaging clients in financial conversations.
- A co-parenting class (Parents Forever) for parents and caregivers experiencing separation, divorce or changes in the custody of their children, where they learned skills to prioritize the parent-child relationship and better communicate with their co-parent. This program is designed to increase child well-being and reduce parental conflict during family transitions.

AGRICULTURE - Jackie McCarville, Regional Dairy Educator
- Jordyn Sattler, Regional Crops & Soils Educator



Casey Lobdell



Jackie McCarville



Jordyn Sattler

The Extension Agriculture Institute is your connection to the latest University of Wisconsin-Madison research. Our five program areas; Agriculture Water Quality, Crops and Soils, Dairy and Livestock, Farm Management, and Horticulture, are here to educate and respond to the needs of the agriculture community while providing resources that promote economic and environmental sustainability in Wisconsin. We apply research to challenges facing communities and businesses.

Casey Lobdell

- Written article about Pasture Turnout in the Wisconsin Shopper Magazine.
- Winter Forage Meeting - An in-person meeting for local farmers and producers from the four-county Area 15. The meeting highlighted many for-age based conversations including inventory, hygiene, breaking down forage samples and results, as well as crop disease that can affect forage.

Jackie McCarville

- A training for youth who are raising animals to learn more about animal welfare, marketing, biosecurity, character development, and food safety. The goal of this training is to help youth better understand the importance of raising ethical animals while promoting agriculture.
- A webinar on Highly Pathogenic Avian Influenza (HPAI) Best Practices for Dairy Farms and Dairy Employees for dairy producers, farm managers, and dairy employees, where participants learned practical biosecurity protocols, employee training strategies, and herd monitoring practices to reduce disease transmission risk, protect animal and human health, and strengthen the long-term resilience and economic sustainability of dairy operations.
- A Badger Dairy Insight webinar for dairy producers and veterinarians, where participants learned how to use calf lung ultrasound to detect respiratory disease earlier and make more informed treatment and management decisions to improve calf health, reduce antimicrobial use, and enhance long-term herd performance.
- An in-person meeting for local farmers and producers from the four-county Area 15. The meeting highlighted many for-age based conversations including inventory, hygiene, breaking down forage samples and results, as well as crop disease that can affect forage.

Jordyn Sattler

- A workshop for farmers and agriculture professionals where they learned how to manage and communicate about stress, mitigate heat stress for animals, and the benefit of good soil health in cropping systems. Through this program, attendees have tools and resources to utilize in conversations around mental health, can recognize signs of animal stress which allows them to improve animal welfare, and understand the importance of soil health as it relates to crop health and farm sustainability.
- A four-part Focus on Forage webinar series for forage growers, livestock producers, agency staff and agricultural consultants where research-based forage management solutions are shared to optimize forage yield and quality to improve animal performance and overall farm profitability.
- Material development and program planning for the 2026 Foundational Crop Scout Training being designed for entry level crop scouts. The goal of the training program is to teach the basic skills necessary for successful monitoring of field crops in Wisconsin with an emphasis on crop stand development, nutrient availability, and pest presence.
- An in-person meeting for local farmers and producers from the four-county Area 15. The meeting highlighted many for-age based conversations including inventory, hygiene, breaking down forage samples and results, as well as crop disease that can affect forage.

POSITIVE YOUTH DEVELOPMENT - Charisse Orth



The Extension Institute of Positive Youth Development prepares the youth of today to become the effective, empathetic adults of tomorrow. Our research-based youth enrichment programs like teens in governance build youth and adult capacity and partnerships that help both sides grow. 4-H clubs, camps and afterschool programs give young people the hands-on experiences they need to develop an understanding of themselves and the world.

- 4-H BINGO Night - An event for 4-H families and community members, where youth and adults play BINGO. Through this effort we are able to provide a fun community event while the Leaders Association is raising funds to help support the 4-H program.
- A planning meeting for the Ambassador Team, where the team worked together with the advisors to plan a countywide 4-H fun night. Through this event youth in Grant County will be able to make new connections, complete a community service project and learn new activities that they can take back to their clubs.
- 4-H Mini Grants - A grant program for 4-H members, where youth could apply to receive financial assistance to support a new or continuing 4-H project area. Through this program members are able to secure supplies that help them dive deeper into their 4-H sparks.



Community Development Institute

DIVISION OF EXTENSION

UNIVERSITY OF WISCONSIN-MADISON

Grant County Extension - March 2026 Report

Blake Roberts Crall - Rural Community Economic Development Specialist, Community Development Institute (*Crawford, Grant, Lafayette & Richland counties*)



The Community Economic Development program promotes local economic well-being and quality of life in Wisconsin communities. We work with and support community economic development practitioners and organizations, tribal and governmental entities, and business and nonprofit organizations and help gain access to the information, research, education, and technical assistance necessary to make informed decisions.

Regional Situational Analysis

Blake completed a comprehensive situational analysis in Aug 2025-Jan 2026, which included stakeholder interviews and review of strategic/comprehensive plans, community needs assessments, and publicly available data. Findings from the situational analysis were used to identify priorities and set goals for this position.

- Conducted **65 stakeholder interviews** with community/economic development professionals, county board members, city/village elected officials, business owners, child care providers & education professionals, tech colleges, health care institutions, library staff, food pantries.
- Interviews and data analysis identified strengths and assets in the region, existing programming, needs/gaps, goals, and priorities for local leaders and community members.

Key Themes from Situational Analysis

Several patterns surfaced repeatedly during interviews, community events, and data analysis.

Theme #1: Housing Quality and Affordability for All Ages

- Housing is a priority area for many economic development partners in the region, and is one of the biggest needs cited.
- Increase housing stock and affordability so businesses can grow/attract workers.

Theme #2: Child Care Accessibility and Affordability

- Some communities are finding ways to innovate on ownership and investment models, and exploring co-location/shared space as solutions
- Despite this progress, child care continues to be unaffordable for families, too far, or schedules are mismatched, leading to parents leaving the workforce, reducing hours, or inability to cover 2nd or 3rd shifts.
- Outstanding question of how new centers opening or expanding impact existing businesses (do they create competition or add to capacity overall?)
- Similar concerns were raised for elder/senior care (limited access to services, expensive, extra strain on workers who are caring for aging family members).

Theme #3: Leadership Development and Civic Engagement

- Limited local capacity is a clearly stated challenge for advancing most community development goals. Supporting the leadership pipeline is a way to build long term capacity for the region, have sustainable impact, and nurture the next generation of leaders regionally.
- Opportunity to address a critical programming gap left post-COVID.

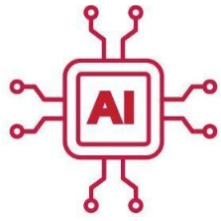
Theme #4: Access to Food and Basic Needs

- Access to basic services and core institutions – such as grocery stores, banks, and pharmacies – is cited as a high priority for communities. Access to services also is needed for attracting and retaining a strong local workforce.
- There was strong agreement that thriving food systems are central to community and economic wellbeing.
- Some reported concerns about impact on food security and local/regional supply chains when grocery stores close, or when social service agencies cease operations, especially for more vulnerable populations, such as senior citizens and children in low-income households.

Theme #5: Supporting entrepreneurs and small businesses

- The region has a strong entrepreneurial ecosystem. This is a priority area and many partners are excited to collaborate on strategies to support and grow small business supports.
- Potential to specifically target industries that compliment other priorities, such as food businesses, child care operations, minority-owned businesses, etc.

Upcoming Events



Understanding AI: A Forum for Tribal and Local Governments

Register Today for Remaining Forums in Eau Claire, Lac du Flambeau and Oshkosh

Join Extension and UW–Madison experts to gain a clear understanding of how governments can use AI. How does artificial intelligence impact local government and how could it be used responsibly? Through hands-on sessions and lectures tailored to address the unique needs of local and tribal governments you will gain critical tools and strategies.

[You can register now](#) for AI forums being held across the state from UW–Madison Extension that are designed specifically for government leaders and employees to gain practical uses of generative AI in their work.

AI Forums will be held in Eau Claire on March 18, Lac du Flambeau on March 26, and Oshkosh on April 22.

Website and registration info: <https://extension.wisc.edu/aiforums/>

Connecting Entrepreneurial Communities Conference

May 13-15 • Green Lake • Registration is Open • About Small Towns, For Small Towns

Join us for a hands-on, immersive conference designed to strengthen rural Wisconsin's entrepreneurial ecosystem. Bringing together local leaders, business owners, and innovators, this event explores new ways to grow and sustain thriving local economies.

This year's dynamic agenda features hands-on sessions including Entrepreneurial Ecosystem 101 and How to Finance Your Local Entrepreneurial Ecosystem, along with How to Foster a Regional Entrepreneurial Ecosystem which will focus on community-level support. Framework for Starting a Business, the Three Most Common Pitfalls of a New Business Venture, featuring the Knuth Brewery success story, Stories from Green Lake will highlight real-world advice for success, and learn about Surviving Seasonal Swings for tourist-town businesses. Create Wisconsin will be there to discuss Weaving Together Arts, Civic, and Economic Vitality and Vibrancy.

Healthcare in the Digital Age: Leveraging Broadband for Better Health and Stronger Communities

Explore the critical connection between broadband access and improved health outcomes—and how these advancements drive local economic growth. As broadband availability grows, the question becomes: How can we maximize its impact on health outcomes and quality of life? This series of free workshops will provide a forum for actionable strategies that strengthen communities and foster economic resilience.

Participants will:

- Discuss the intersection of connectivity and quality of care, identifying how expanded broadband can transform health services and patient experiences.
- Identify opportunities and gaps in connected care, shaping regional priorities for innovation and investment.
- Collaborate on practical solutions to address healthcare service gaps and ensure equitable access to care.

Workshops will be held in Green Bay on April 22, Rhinelander on April 23, Dodgeville on May 6, Rice Lake on May 19, and Milwaukee on June 2.

More info here: <https://economicdevelopment.extension.wisc.edu/healthcareworkshops/>

Extension events are open to all. The University of Wisconsin–Madison Division of Extension provides equal opportunities in employment and programming in compliance with state and federal law. You may request an interpreter, materials in an alternative language and/or format, and/or other services to make this event more accessible. Contact oaic@extension.wisc.edu. Make your request 25 days before the event. There is no added cost to you for these services.

Grant County

Economic Development

April 7th, 2026

Roger Guthrie
Chair, Ag/Extension Committee
111 Jefferson Street
Lancaster, WI 53813

Re: \$3,008 Special Projects Budget Line Item

Dear Roger,

Please accept this letter as our official request for the \$3,008 designated in Grant County's Ag/Extension Committee budget as "Special Project".

This year we are planning on various marketing projects, focusing on marketing projects that will draw people to have overnight stays in the County.

Thanks so much for your support in these endeavors.

Sincerely,



Ron Brisbois
Director



Cc:

Robert Keeney
Nate Dreckman

GRANT COUNTY, WI
CHECK LISTING BY CHECK DATE
FROM: 3/1/2026 TO: 3/31/2026



DATE	CHK #	DEPT #	VENDOR NAME	TYPE	INVOICE DESCRIPTION	ACCOUNT	OBJECT DESCRIPTION	INVOICE #	AMOUNT
03/06/26	3486	Ext	Amazon Capital Services, Inc.	EFT	keyboard	10061001-531000	Office Supplies/Equipt	194P-TM3G-PG1L	36.13
03/06/26	3512	Ext	Gordon Flesch Company, Inc.	EFT	Jan-Feb copies	10061001-531002	Printing & Copying	IN15514304	324.10
03/06/26	2024330	Ext	Beverly Doll	Printed	Jan-Feb travel	10061001-533000	Mileage & Travel	bd 1-2 2026	363.23
03/06/26	2024330	Ext	Beverly Doll	Printed	REEL event supplies	10061001-531000	Office Supplies/Equipt	bd 1-2 2026	23.50
03/20/26	2024583	Ext	CenturyLink	Printed	Lumen Bill Breakdown	10061001-522004	Phone and Internet	776270805	0.07
03/20/26	2024650	Ext	Morris Newspaper Corp of Wisconsin	Printed	1 yr sub Platteville Journal	10061001-532003	Books/Publications/Subscrip tio	55031	49.00
								Total	796.03